

This visual guide is designed to help you find your way around Dundee Contemporary Arts (DCA) and give you an idea of what you can find on each level of the building.

FRONT OF THE BUILDING

DCA is located at 152 Nethergate. You will enter through an automatic sliding door onto the ground floor.



BACK OF THE BUILDING

At the back of DCA you will find two pay and display car parks and a multi-storey car park. You can access the building using the lift (you will enter on floor -2), which can take you to any floor of the building, or the stairs which will take you to the lower ground floor.



GROUND FLOOR

On the ground floor you will find our Box Office, [DCA Shop](#), Information Space, [Create Space](#) and our [Galleries](#).

There are also toilets, an accessible toilet, baby changing facilities, a feeding room and a gender-neutral toilet.



DCA SHOP

In our shop you will find a range of items to browse and buy. You can also buy items [online](#).



BOX OFFICE

You can buy cinema tickets, event tickets, workshop tickets, memberships and gift cards from the staff at our Box Office.

They can also help you with any questions you might have or help direct you around the building.



TOILETS

The toilets are in the glass circle just to the right of Box Office.

The accessible toilet, baby changing facilities, feeding room and gender-neutral toilet are located to the right of this before you get to Information Space.



INFORMATION SPACE

In this space you can look at limited edition artwork that has been created by exhibiting artists. These are available to buy from our shop and [online](#).

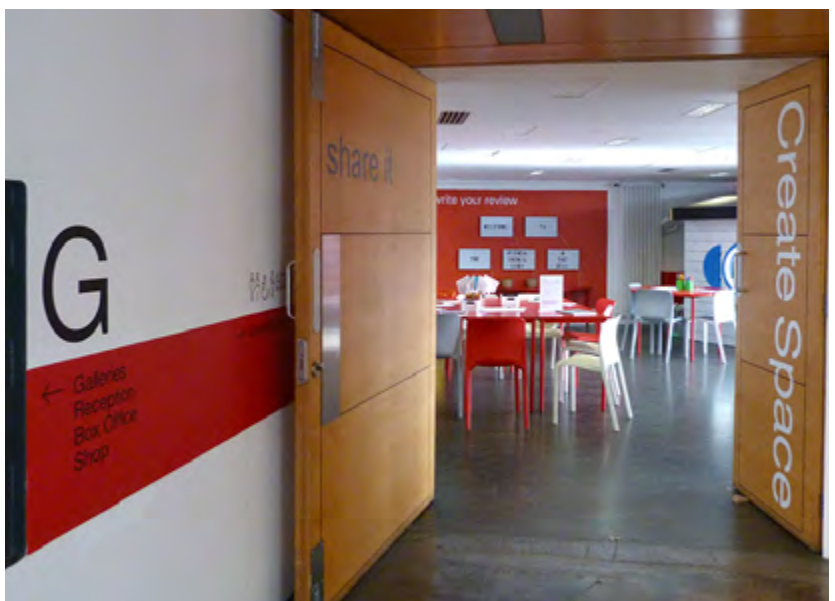
You can also find out more about our current exhibition and watch a video interviews with the artists.



CREATE SPACE

Our Create Space has fun [activity sheets](#) to try and materials to use. Children under 12 should be accompanied by an adult.

Sometimes Create Space is closed for a workshop. If this is the case, the door will be closed and there will be a sign to tell you.



GALLERIES

The layout of our galleries changes depending on the exhibition/s.

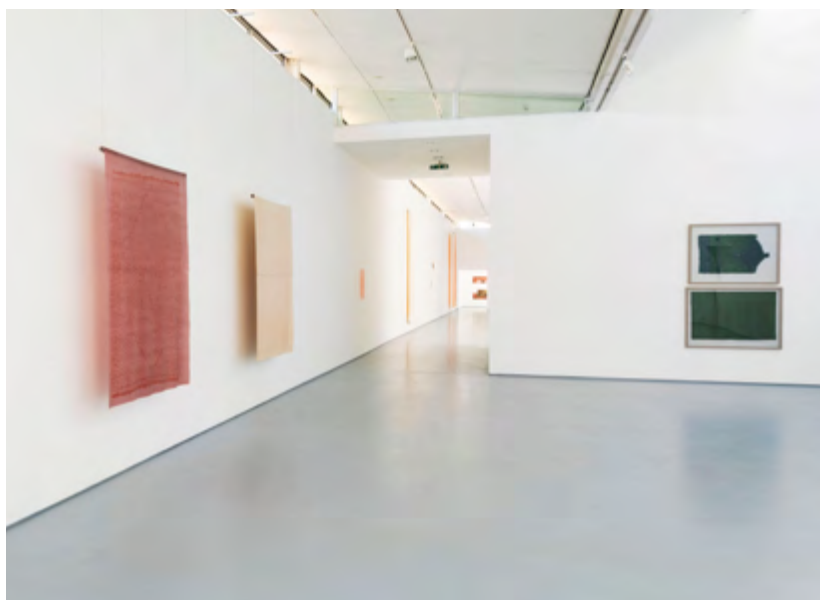
Until Sun 4 August 2024 you can see Sukaina Kubba's exhibition *Turn Me Into a Flower* across Gallery 1 and Gallery 2. Exhibition Notes are available at the entrance to both galleries as well as a sensory box.



GALLERY 1

Gallery 1 has artworks on the wall and a bench in the centre of the room, which you are welcome to sit on. A corridor that leads through to Gallery 2.

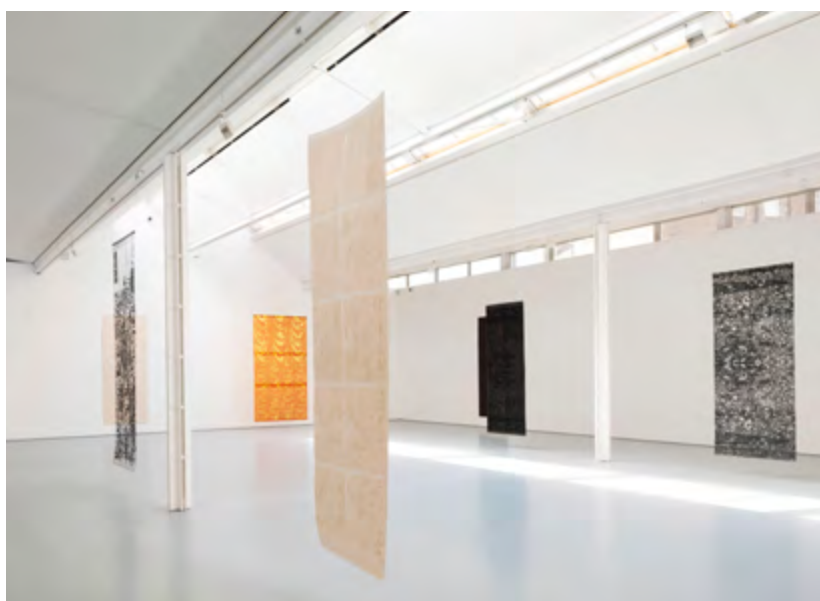
Please be aware that both galleries contain artworks made with rubber and latex. If you have any concerns, please notify our Visitor Services team.



GALLERY 2

Gallery 2 features artworks on the wall and also large work hanging from the ceiling. Please do not touch the artwork. We have a sensory box available if you would like to handle some samples.

There is also a small room at the back of the gallery with more work inside.



LIFT

The lift is located beside the entrance to Create Space and can take you to the other levels of the building or out to the carpark at the back of the building on -2.



STAIRS TO LOWER GROUND FLOOR

As you come in through the front entrance there are stairs leading down to the lower ground floor.

There is another set of stairs leading down to the lower ground floor, located outside of Gallery 2.



STAIRS TO FLOOR 1

There are stairs leading up to the Meeting Room on floor 1. These stairs are located inbetween Gallery 1 and Gallery 2.

Another set of stairs leads down to the lower ground floor.



LOWER GROUND FLOOR

On the lower ground floor you will find Jute Café Bar, Cinema 1, Cinema 2 and our Print Studio.

There are also toilets and an accessible toilet.



JUTE CAFE BAR

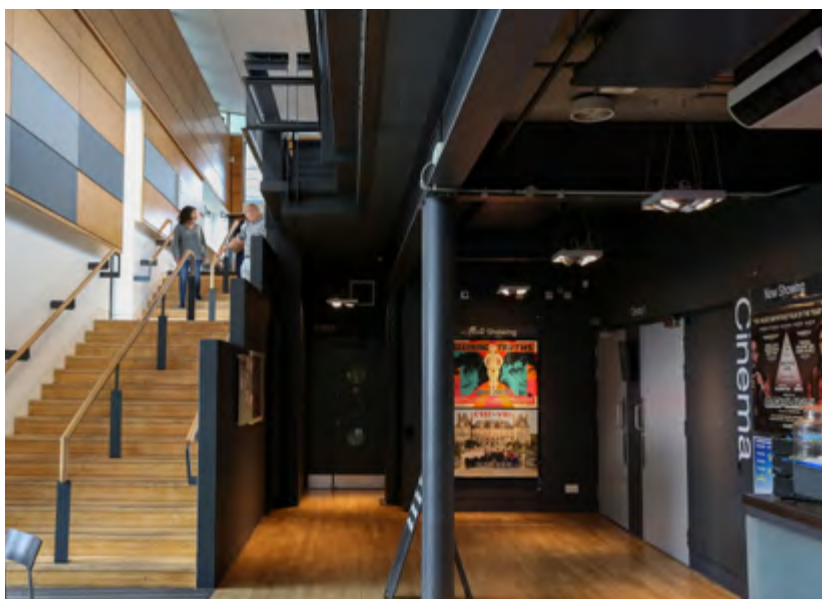
You can buy food and drinks from Jute Café Bar. Tables can be booked in advance online or by calling 01382 909 246 or you can check availability at the reception desk to the right of the bar.



CINEMAS

We have two cinemas located to the left of the bar.

Check our website to find out what's on. A Visitor Assistant will scan your ticket and can show you to your seat if required.



CINEMA 1

Cinema 1 has 198 seats and is the larger of the two cinemas.

Please sit in your allocated seat. Once the film is finished, please take any rubbish with you - this can be put in the bins in the cinema foyer.



CINEMA 2

Cinema 2 has 72 multicoloured seats.

Please sit in your allocated seat. Once the film is finished, please take any rubbish with you - this can be put in the bins in the cinema foyer.



TOILETS

The toilets are located just outside the cinemas through an automatic door.



PRINT STUDIO

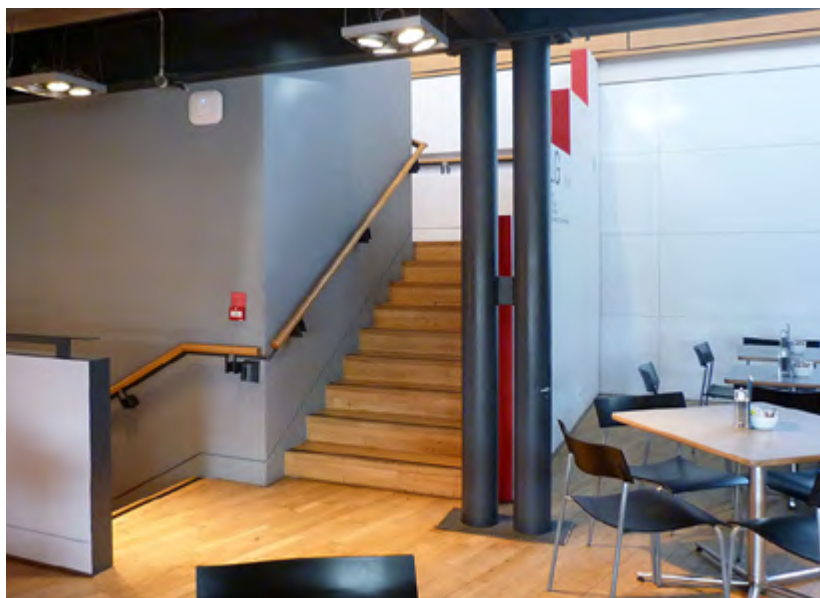
The Print Studio has lots of different equipment in it to create print, photography and digital work. Take a look at our Get Creative programme of workshops and courses.

Sessions for Registered Users should be booked in advance.



STAIRS

There are stairs leading down to -1 located outside the Print Studio and also stairs leading up to the ground floor.



LIFT

The lift is located to the right of the bar area.

This can take you to the other floors of the building or out to the carpark at the back of the building on -2.



FLOOR 1

There is a meeting room located on floor 1.

This floor can be accessed by the lift or the stairs between the galleries. Please ask at Box Office if you are unsure of where to go.



FLOORS -1, -2 AND -3

These floors are currently used for events and workshops. If you are attending any of these, a member of staff can show you where to go.



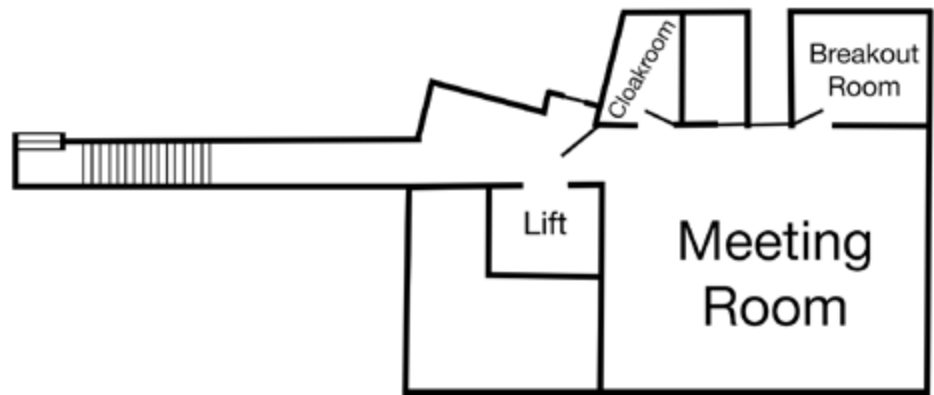
ADDITIONAL FACILITIES

Free period products are available from dispensers around the building. There is one located outside the accessible toilet on the ground floor, and others in the toilets on the lower ground floor. Nappies and baby wipes are available in the baby changing area on the ground floor.

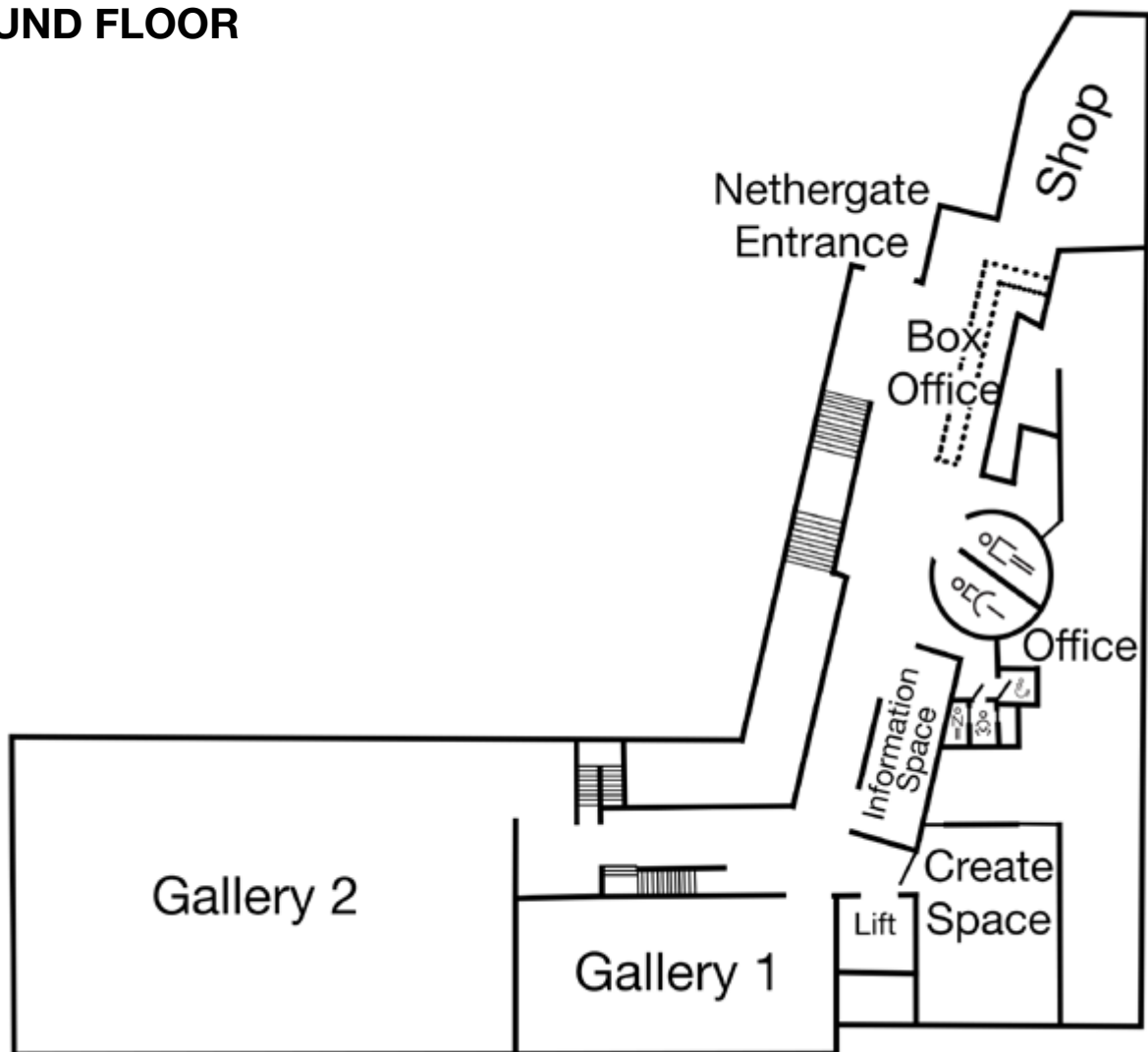


FLOOR PLAN

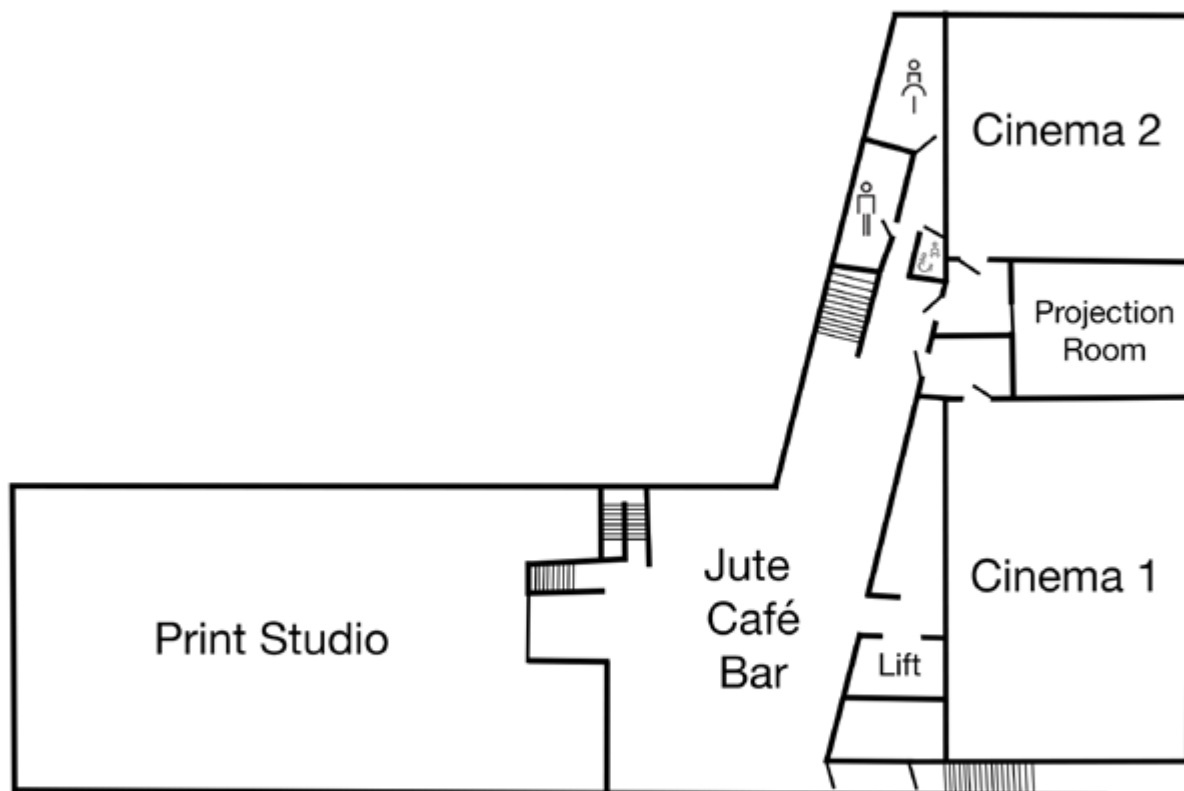
FLOOR 1



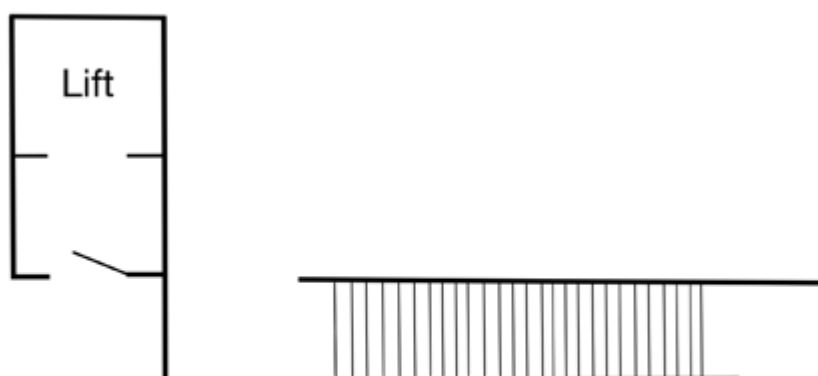
GROUND FLOOR



LOWER GROUND FLOOR



FLOOR -2



Car parks